

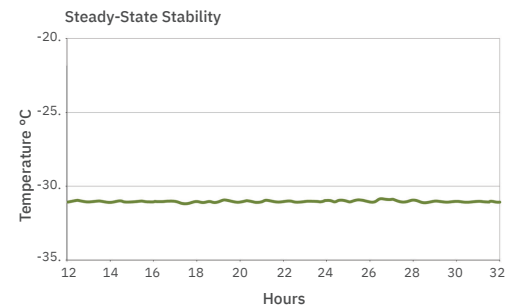
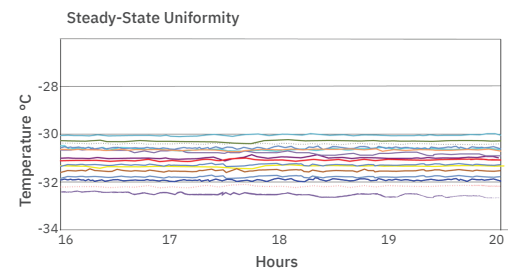
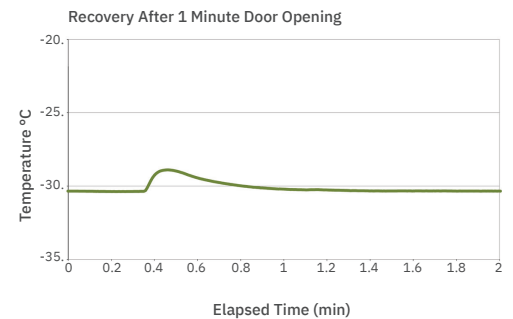
Application, Rating, and Electrical Data	
Application	Precision temperature storage for biopharmaceutical and life science research applications
Storage Volume	25.2 cu ft (714 L)
Temperature Range	-15° to -35°C
Set Point	-30°C
Electrical Power	115V 60Hz 220-240V 50/60Hz
Maximum Current	6.6A 3.1A
Facility Supply Rating	Branch circuit with earth ground, meeting plug/cord ratings as well as local electrical safety codes and requirements 110-120V AC: 15 A (minimum) 220-240V AC: 10 A (minimum)
Power Plug/Power Cord Length	NEMA 5-15 hospital-grade 115V 60Hz, 8 to 10 ft (2.4-3.0m) Inquire about additional plug/cord options
Certification/Agency Listing	QPS (Certified to UL and CSA Standards) IEC/UL61010-2-011: 2016 IEC 61010-1:2010, AMD1:2016
Energy Star	Yes, ENERGY STAR® Certified High Performance Freezer
Indoor/Outdoor Use	Indoor use only, non-residential
Application Environment	Non-corrosive, non-flammable, non-explosive
Ambient Operating Temperature	+15°C to +32°C +59°F to +90°F

Refrigeration	
Refrigeration System	VCC compressor-based, forced-air hydrocarbon
Compressor	Hermetic, variable speed (VCC). Rated speed range: 1600-4000 rpm
Condenser Type	Air-cooled fin and tube, sealed
Expansion Device	Cap tube
Evaporator Type	Direct expansion with forced-air fin and tube
Defrost Method	Automatic
Refrigerant	R290, EPA SNAP and EU F-Gas compliant natural hydrocarbon refrigerant

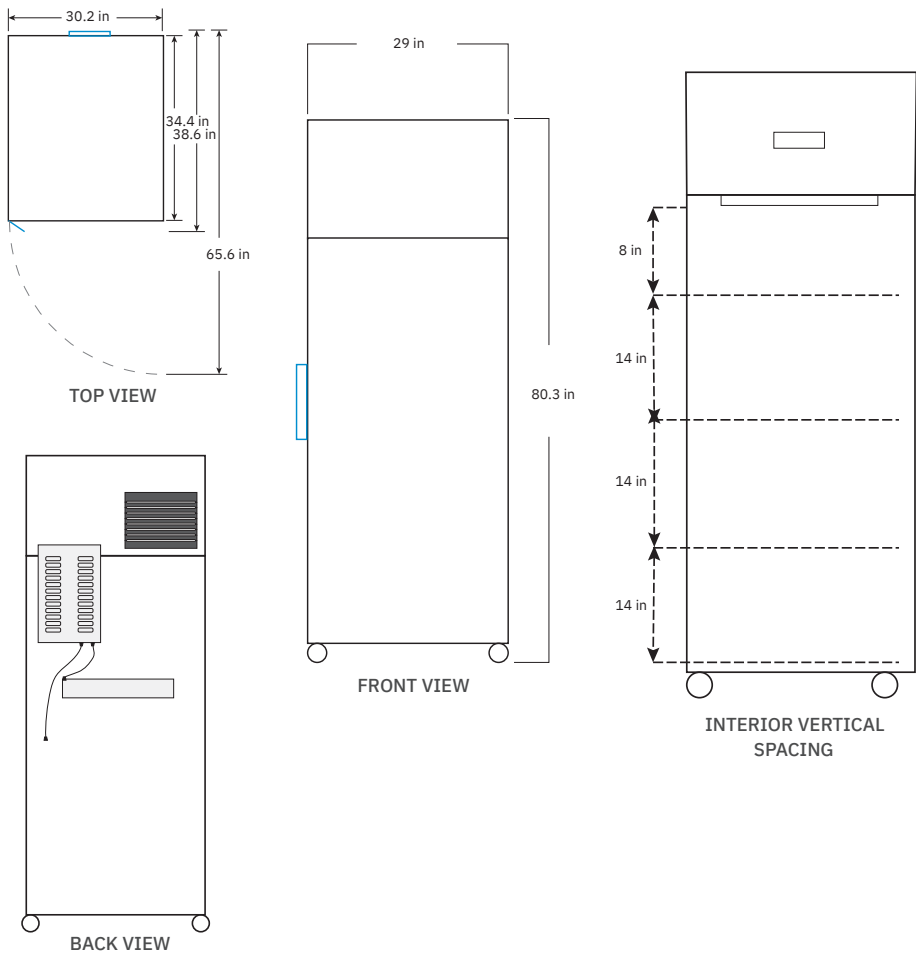
Controller / Configuration Settings	
User Interface	LED digital display, °C or °F
Power Switch	On/Off
Controller Type	Microprocessor with alarm/monitor
Security	Lockable exterior door, locking interior drawers available as accessory
Control Sensor	RTD, stainless steel
Communication Port	Remote alarm contacts
Power Failure Alarm	Yes
High/Low Alarm	Yes, fully adjustable
Door Ajar Alarm	Yes
Min/Max Temperature	Yes, display and reset
Temperature Monitoring Ballast	Yes, 4 oz bottle with screw cap
Battery Backup	Yes, 9 volt, non-rechargeable, lithium

Performance Characteristics (normal operating conditions)	
Uniformity °C	+/-2.0
Recovery to -29.5°C after 1 min door opening min	21
Stability °C	0.1
Energy consumption kWh/day	8.77
Noise emission dB	52
Heat rejection BTU/hr	2356
Pull-down time to -30°C min	65

All performance data from 25 cu ft freezer, 25°C ambient, -30.0°C



Dimensions and Construction	
Interior (w x h x d)	24.7 x 58.1 x 30 in 628 x 1476 x 762 mm
Exterior (w x h x d)	29 x 80.3 x 34.4 in 737 x 2039 x 874 mm
Overall Exterior (w x h x d)	30.2 x 80.3 x 38.6 in 766 x 2039 x 980 mm *Includes handle, electrical box and top cover
Insulation	EPA SNAP and EU F-Gas compliant insulation and foaming agents
Exterior/Interior Finish	Bacteria-resistant powder-coating
Door	Solid door, right hinge
Access Port	Top Access Port- for external monitoring probe(s) (0.75 in 19 mm diameter)
Interior Storage (w x d)	4 ventilated shelves 22.5 x 27.9 in 572 x 709 mm
Mobility	Easily movable locking casters
Net Weight	441 lb 201 kg
Shipping Weight	531 lb 242 kg
Clearance Requirements	Minimum of 8" (203mm) above and 3" (76mm) behind unit for proper ventilation, clearance, and feature access
Available Accessories	Remote alarms, remote lock adapter kit, floor and wall seismic bracket kits, stacking kit, pedestal, storage trays, locking interior drawers, certificate of calibration, temperature validation, validation guide (IQ/OQ), extended warranty
Certificate of Calibration	Yes, available as an option, generated with an ISO 17025 certified, NIST traceable thermometer
Warranty	3 years compressor, 2 years parts, 1 year labor (Outside US/Canada: Please consult with your local representative for labor warranty information.)



800-B Beaty Street, Davidson, NC 28036
 T: 800.242.7197 | www.farrarscientific.com | LSSinfo@tranetechnologies.com

© 2023 Trane Technologies Life Sciences LLC.
 All Rights Reserved.
 LSFU-PRG009A-EN
 11-5-23

Distributed by Abacus dx
 1800 ABACUS (AUS) 0800 222 170 (NZ) | info@abacusdx.com | www.abacusdx.com

abacus dx